



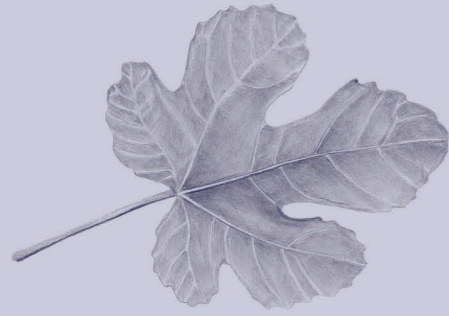
# 3 bedroom

Apartment floor plan

# Manningtree

Hawthorn

Retirement Living with Uniting AgeWell



# 3 bedroom

Apartment floor plan

Internal Area 147.65 m<sup>2</sup> / 15.8 sq

Balcony Area 25.86 m<sup>2</sup> / 2.8 sq

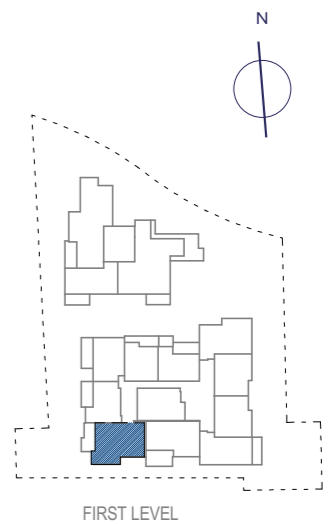
Total Area 173.51 m<sup>2</sup> / 18.6 sq



Scale 1:100

- \* size and room dimensions are indicative only and subject to variation
- \* all floor areas are net lettable

1800 001 047  
mannings.com.au



FIRST LEVEL